



# BEFORE & AFTER SCHOOL CARE

In partnership with Shelby County Schools, YMCA Before & After School Care provides a safe, supportive environment with a focus on enrichment activities, academics, and fun!



HEALTHY SNACK



HOMWORK HELP



PHYSICAL ACTIVITY



INTEREST CENTERS



ENRICHMENT PROGRAMMING



ACADEMIC ALIGNMENT

Y CARE IS IN YOUR SCHOOL!



# REGISTER ONLINE

[ymcamemphis.org](http://ymcamemphis.org)

# Y CARE IS IN YOUR SCHOOL!

Register Online: [ymcamemphis.org/scs](http://ymcamemphis.org/scs)

## PROGRAM FEES

**Before School Care** – \$25 per child weekly

**After Care** – \$40 per child weekly

**Before & After School Care** – \$50 per child weekly

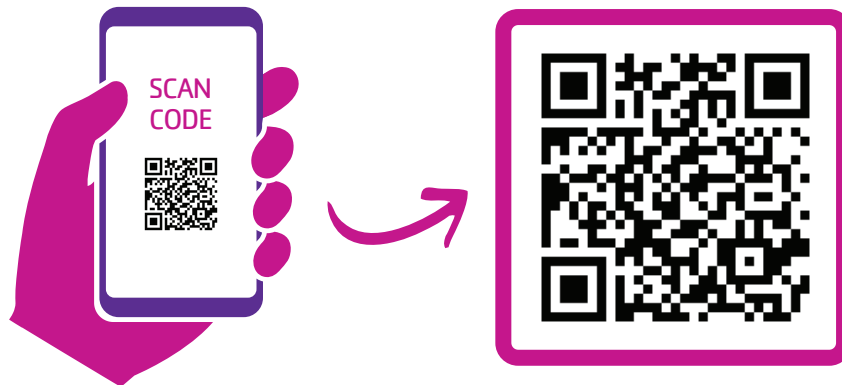
**Annual Registration Fee** – \$25 per child\*

\*Registration Fee is waived for YMCA Members.

Fee assistance is available. Visit: [ymcamemphis.org](http://ymcamemphis.org) to apply online.

## HOW TO REGISTER:

Registration can be found on our website at [www.ymcamemphis.org/scs](http://www.ymcamemphis.org/scs). Scan the QR code below to get started!



### CURRICULUM

THE WORLD AROUND ME



LITERACY & READING



SCIENCE ACTION CLUB



GUEST SPEAKERS & EVENTS



CREATIVE EXPRESSION



HOMEWORK & TUTORING



T.E.A.M. FOCUS



EXPLORATION STATION



FUEL & FUN!



SAFETY AROUND WATER



MEET UP, BUDDY UP!



UPSTANDERS UNITED



## FIND IT ONLINE

[ymcamemphis.org](http://ymcamemphis.org)

Find Program Information, Fill Forms, Read FAQs and more on our website!



INFO & REGISTRATION



FILL FORMS



READ FAQs



FOR YOUTH DEVELOPMENT®  
FOR HEALTHY LIVING  
FOR SOCIAL RESPONSIBILITY

YMCA OF MEMPHIS & THE MID-SOUTH  
7171 Goodlett Farms Pkwy, Cordova, TN 38016  
P: 901.766.7677 W: [ymcamemphis.org](http://ymcamemphis.org)